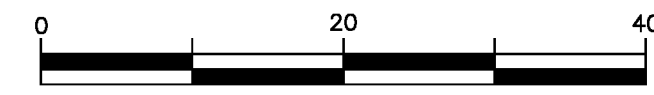


SUBDIVISION PLAN OF:  
 LOT A, DISTRICT LOT 67,  
 OYSTER DISTRICT, PLAN EPP24148.  
 Pursuant to Section 67 of the Land Title Act.  
 BCGS 92B 092



The intended plot size of this plan is 560mm in height by 864mm in width (D Size) when plotted at a scale of 1:500.

Integrated Survey Area No. 43, Town of Ladysmith, NAD83 (CSRS) 3.0.0.BC.1.NV.  
 Grid bearings are derived from observations between geodetic control monuments 10H2653 & 10H2648.

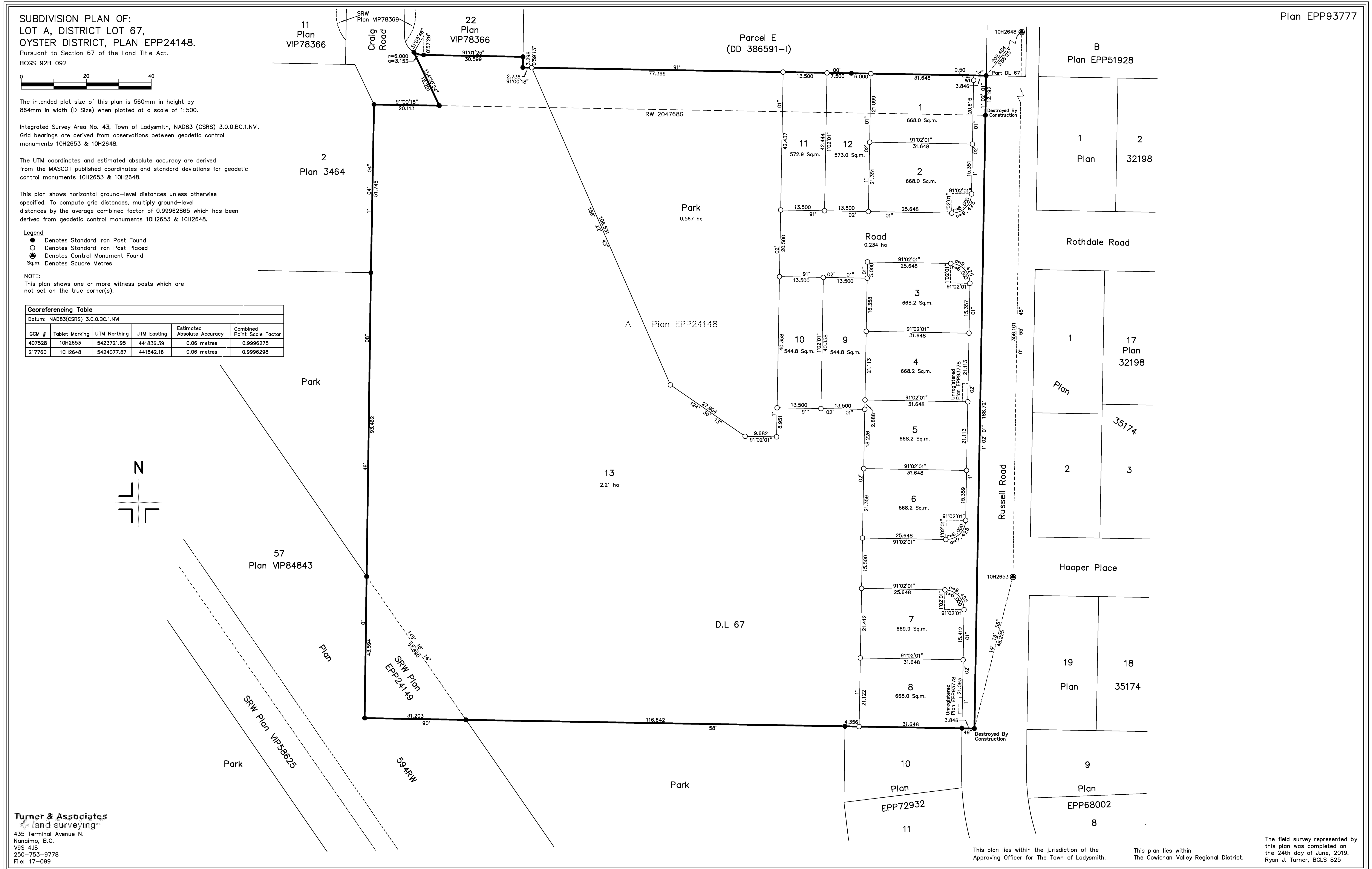
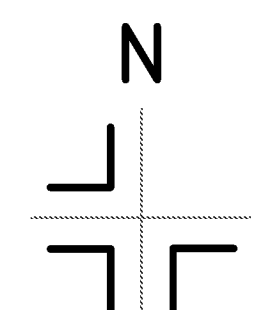
The UTM coordinates and estimated absolute accuracy are derived from the MASCOT published coordinates and standard deviations for geodetic control monuments 10H2653 & 10H2648.

This plan shows horizontal ground-level distances unless otherwise specified. To compute grid distances, multiply ground-level distances by the average combined factor of 0.99962865 which has been derived from geodetic control monuments 10H2653 & 10H2648.

- Legend**
- Denotes Standard Iron Post Found
  - Denotes Standard Iron Post Placed
  - ⊙ Denotes Control Monument Found
  - Sq.m. Denotes Square Metres

**NOTE:**  
 This plan shows one or more witness posts which are not set on the true corner(s).

Georeferencing Table					
Datum: NAD83(CSRS) 3.0.0.BC.1.NV					
GCM #	Tablet Marking	UTM Northing	UTM Easting	Estimated Absolute Accuracy	Combined Point Scale Factor
407528	10H2653	5423721.95	441836.39	0.06 metres	0.9996275
217760	10H2648	5424077.87	441842.16	0.06 metres	0.9996298



**Turner & Associates**  
 land surveying™  
 435 Terminal Avenue N.  
 Nanaimo, B.C.  
 V9S 4J8  
 250-753-9778  
 File: 17-099

This plan lies within the jurisdiction of the Approving Officer for The Town of Ladysmith.  
 This plan lies within The Cowichan Valley Regional District.  
 The field survey represented by this plan was completed on the 24th day of June, 2019.  
 Ryan J. Turner, BCLS 625